

LED Aufbauleuchte SL

LED surface mtd. luminaire SL

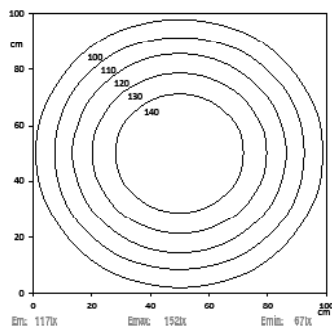
LED Maschinenleuchte in Linienform mit 12-30V Betriebsspannung
LED machine luminaire line shaped with 12-30V operating voltage.



Lichtverteilung | Light distribution

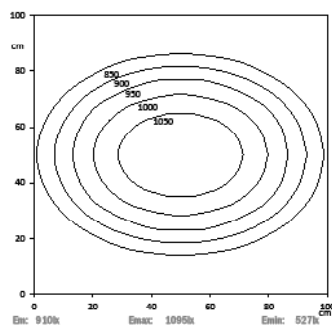
Lichtpunkthöhe | Metering distance: 100cm

LED SL 140

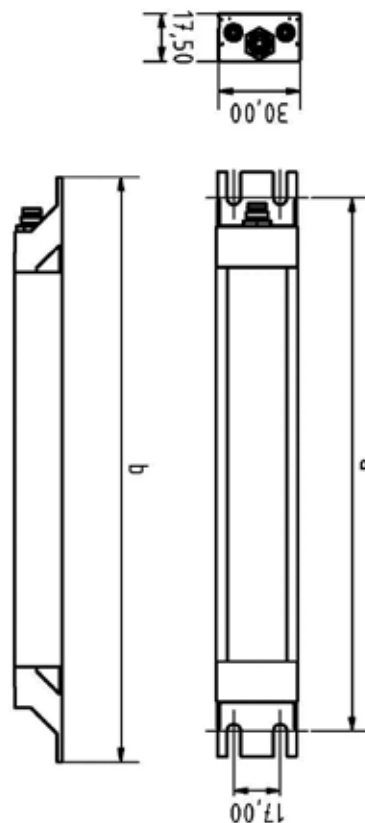


Lichtpunkthöhe | Metering distance: 100cm

LED SL 1120



Dimensionierung | Dimensions



Technische Daten | Technical data

Anschlusswert: Connection value:	12 - 30V 12 - 30 V
Anschluss Connection type:	Steckverbinder M8 4pol. A codiert connector M8 4pol. A coded
Gehäuse: Housing:	Aluminium eloxiert, Kunststoffhalterung aluminium anodized, plastic mounting
Schutzart: Protection rating:	PMMA _d = IP40 PU _d = IP69K PMMA _d = IP40 PU = IP69K
Schutzklasse: Protection class:	III III
Abdeckung: Cover:	PMMA diffus oder PU _d diffus PMMA diffuse or PU _d diffuse
Farbtreue: Color rendering:	R _a / CRI ≥ 80 R _a / CRI ≥ 80
Lebensdauer: Durability:	min. 60 000h min. 60 000h
Max. Umgebungs- temperatur: Max. ambient temperature:	-20°C / +70°C -20°C / +70°C
Optik: Optics:	120° Optik 120° optics
Belegung: Pin assignments	1 = 12 - 30V DC br br 2 = 1,2V - 10V analog control ws wh 3 = GND - bl bl 4 = NC
Dimmen: Dimming:	stufenlos dimmbar stepless dimming

Normen / Approbationen Standards / Approvals

DIN EN 55015 (EMV)
DIN EN 61547 (EMV)
DIN EN 60598-1
DIN EN 62471



Maschinenbau



Medizintechnik



Erneuerbare
Energien



Mobile
Automation



E-Mail

sales@sangel.com

Hotline

+49 521.911750

Nomenklatur Nomenclature	Katalognr. Catalogue no.	Länge Length	Abdeckung Cover	Lichtstrom Luminous flux	Leistungsaufnahme Power consumption	Lichtfarbe Light temp.
					bei 24 V DC	

Starre Halterung | static mounting

LED SL 140 S-PMMAAd-M8-57	15070708	a: 196,0mm b: 215,0mm	PMMA diffus PMMA diffuse	ca. 603 lm	3,4W	5.700K
LED SL 140 S-PUd-M8-65	15070965	a: 196,0mm b: 215,0mm	PUR diffus PUR diffuse	ca. 603 lm	3,4W	6.500K
LED SL 280 S-PMMAAd-M8-57	15070709	a: 336,0mm b: 355,0mm	PMMA diffus PMMA diffuse	ca. 1206 lm	6,7W	5.700K
LED SL 280 S-PUd-M8-65	15070961	a: 336,0mm b: 355,0mm	PUR diffus PUR diffuse	ca. 1206 lm	6,7W	6.500K
LED SL 560 S-PMMAAd-M8-57	15070710	a: 616,0mm b: 635,0mm	PMMA diffus PMMA diffuse	ca. 2412 lm	13,4W	5.700K
LED SL 560 S-PUd-M8-65	15070963	a: 616,0mm b: 635,0mm	PUR diffus PUR diffuse	ca. 2412 lm	13,4W	6.500K
LED SL 840 S-PMMAAd-M8-57	15070711	a: 896,0mm b: 915,0mm	PMMA diffus PMMA diffuse	ca. 3618 lm	20,1W	5.700K
LED SL 840 S-PUd-M8-65	15070964	a: 896,0mm b: 915,0mm	PUR diffus PUR diffuse	ca. 3618 lm	20,1W	6.500K
LED SL 1120 S-PMMAAd-M8-57	15070960	a: 1176,0mm b: 1195,0mm	PMMA diffus PMMA diffuse	ca. 4824 lm	26,8W	5.700K
LED SL 1120 S-PUd-M8-65	15070969	a: 1176,0mm b: 1195,0mm	PUR diffus PUR diffuse	ca. 4824 lm	26,8W	6.500K
LED SL 1400 S-PMMAAd-M8-57	15071024	a: 1456,0mm b: 1475,0mm	PMMA diffus PMMA diffuse	ca. 6030 lm	33,5W	5.700K
LED SL 1400 S-PUd-M8-65	15071025	a: 1456,0mm b: 1475,0mm	PUR diffus PUR diffuse	ca. 6030 lm	33,5W	6.500K

Starre Halterung mit zweitem Flansch zum Durchschleifen | static mounting with second flange for loop through

LED SL 140 S-PMMAAd-M8D-57	15070807	a: 196,0mm b: 215,0mm	PMMA diffus PMMA diffuse	ca. 603 lm	3,4W	5.700K
LED SL 140 S-PUd-M8D-65	15070970	a: 196,0mm b: 215,0mm	PUR diffus PUR diffuse	ca. 603 lm	3,4W	6.500K
LED SL 280 S-PMMAAd-M8D-57	15070712	a: 336,0mm b: 355,0mm	PMMA diffus PMMA diffuse	ca. 1206 lm	6,7W	5.700K
LED SL 280 S-PUd-M8D-65	15070971	a: 336,0mm b: 355,0mm	PUR diffus PUR diffuse	ca. 1206 lm	6,7W	6.500K
LED SL 560 S-PMMAAd-M8D-57	15070713	a: 616,0mm b: 635,0mm	PMMA diffus PMMA diffuse	ca. 2412 lm	13,4W	5.700K
LED SL 560 S-PUd-M8D-65	15070972	a: 616,0mm b: 635,0mm	PUR diffus PUR diffuse	ca. 2412 lm	13,4W	6.500K
LED SL 840 S-PMMAAd-M8D-57	15070822	a: 896,0mm b: 915,0mm	PMMA diffus PMMA diffuse	ca. 3618 lm	20,1W	5.700K
LED SL 840 S-PUd-M8D-57	15070880	a: 896,0mm b: 915,0mm	PUR diffus PUR diffuse	ca. 3618 lm	20,1W	5.700K