

LED Aufbauleuchte KL 105

LED surface mtd. luminaire KL 105

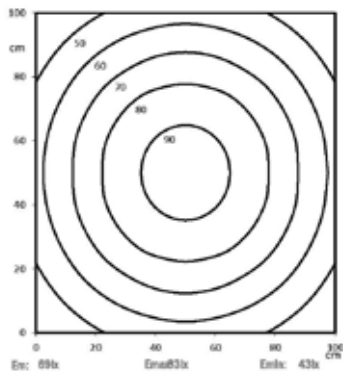
Kompakte LED Maschinenleuchte mit 24V Betriebsspannung
Compact LED machine luminaire with 24V operating voltage



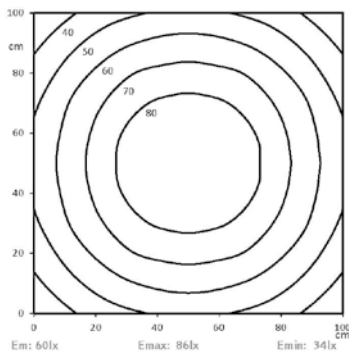
Lichtverteilung | Light distribution

Lichtpunkthöhe | Light source height: 100cm

PMMA diffus | PMMA diffuse

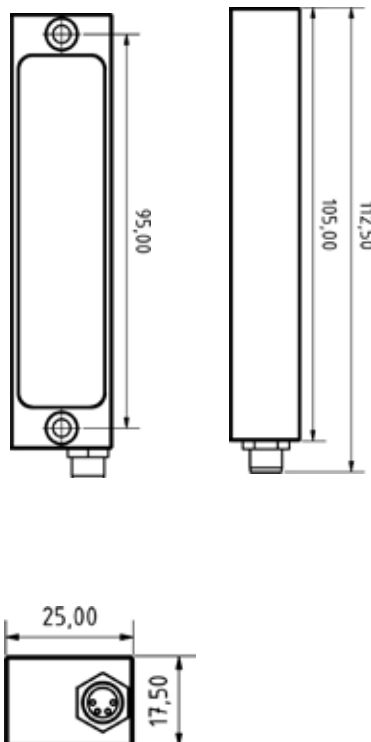


ESG diffus | Single-pane-safety glass diffuse



Dimensionierung | Dimensions

Maximaler Schraubenkopfdurchmesser |
Maximum screw head diameter: \varnothing 7,4 mm



Technische Daten | Technical data

| | |
|---------------------------|---|
| Leistung: | 3,1W |
| Power: | 3,1W |
| Anschlusswert: | 24V DC (-10%/+15%) |
| Connection value: | 24V DC (-10%/+15%) |
| Anschluss: | Steckverbinder M8 4pol. A codiert |
| Connection type: | M8 connector 4pol. A coded |
| Gehäuse: | Aluminium eloxiert |
| Housing: | Anodised aluminium |
| Schutzart: | IP67 |
| Protection rating: | IP67 |
| Schutzklasse: | III |
| Protection class: | III |
| Abdeckung: | PMMA diffus oder ESG diffus |
| Cover: | PMMA diffuse or safety glass diffuse |
| Farbtreue: | Ra / CRI \geq 80 |
| Colour rendering: | Ra / CRI \geq 80 |
| Lebensdauer: | min. 60 000h |
| Service life: | min. 60 000h |
| Max. Umgebungstemperatur: | -20°C / +45°C |
| Max. ambient temperature: | -20°C / +45°C |
| Optik: | 120° Optik |
| Optics: | 120° optics |
| Belegung: | 1 = DC (+) br br |
| Pin assignment: | 2 = Eco (+) ws wh |
| | 3 = DC (-) bl bl |
| | 4 = NC |

Normen / Approbationen Standards / Approvals

DIN EN 55015 (EMV)
DIN EN 61547 (EMV)
DIN EN 60598-1
DIN EN 62471



| Nomenklatur Nomenclature | Katalognr. Catalogue no. | Abdeckung Cover | Anschluss Connection type | Lichtstrom Luminous flux | Lichtfarbe Light temp. |
|-------------------------------------|-----------------------------|------------------------------------|---|-----------------------------|---------------------------|
| LED KL 105 PMMA _d -M8-57 | 15070132 | PMMA diffus PMMA diffuse | M8 Steckverbinder M8 connector 4pol. | ca. 402 lm | 5.700K |
| LED KL 105 PMMA _d -M8-40 | 15070134 | PMMA diffus PMMA diffuse | M8 Steckverbinder M8 connector 4pol. | ca. 402 lm | 4.000K |
| LED KL 105 ESG _d -M8-57 | 15070136 | ESG diffus safety glass diffuse | M8 Steckverbinder M8 connector 4pol. | ca. 402 lm | 5.700K |
| LED KL 105 ESG _d -M8-40 | 15070138 | ESG diffus safety glass diffuse | M8 Steckverbinder M8 connector 4pol. | ca. 402 lm | 4.000K* |

Technische Änderungen vorbehalten. Lichtstrom und Lichtfarbe können variieren.
Subject to technical changes. The luminous flux and colour temperature may vary.

LED Aufbauleuchte KL 185

LED surface mtd. luminaire KL 185

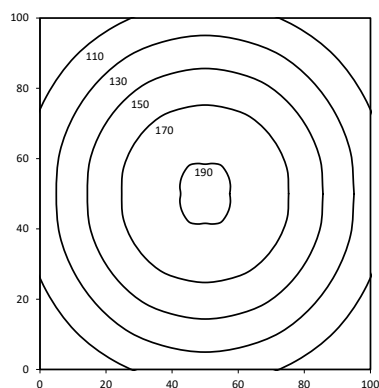
Kompakte LED Maschinenleuchte mit 24V Betriebsspannung
Compact LED machine luminaire with 24V operating voltage



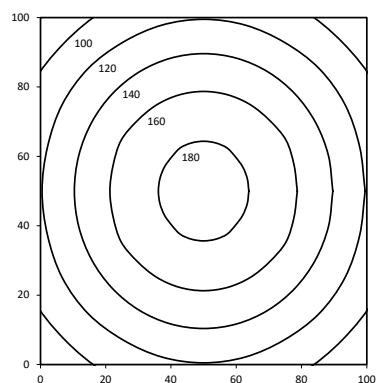
Lichtverteilung | Light distribution

Lichtpunkthöhe | Light source height: 100cm

PMMA diffus | PMMA diffuse

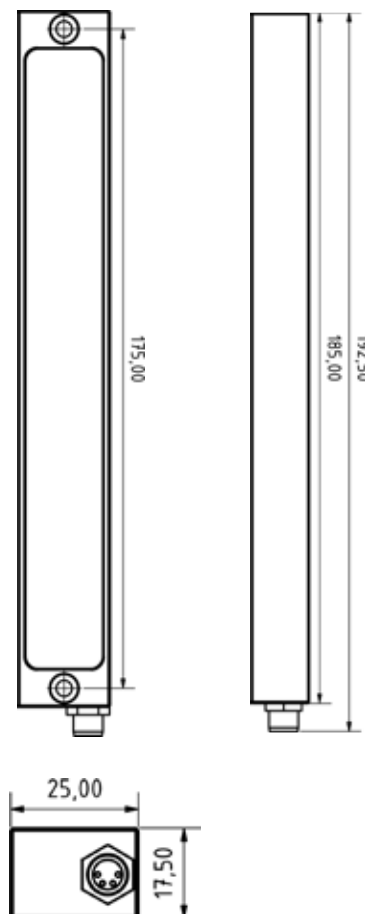


ESG diffus | Single-pane-safety glass diffuse



Dimensionierung | Dimensions

Maximaler Schraubenkopfdurchmesser |
Maximum screw head diameter: \varnothing 7,4 mm



Technische Daten | Technical data

| | |
|--|---|
| Leistung: Power: | 6,2W 6,2W |
| Anschlusswert: Connection value: | 24V DC (-10%/+15%) 24V DC (-10%/+15%) |
| Anschluss: Connection type: | M8 Steckverbinder 4pol. A codiert M8 connector 4pol. A coded |
| Gehäuse: Housing: | Aluminium eloxiert Anodised aluminium |
| Schutzart: Protection rating: | IP67 IP67 |
| Schutzklasse: Protection class: | III III |
| Abdeckung: Cover: | PMMA diffus oder ESG diffus PMMA diffuse or safety glass diffuse |
| Farbtreue: Colour rendering: | Ra / CRI \geq 80 Ra / CRI \geq 80 |
| Lebensdauer: Service life: | min. 60 000h min. 60 000h |
| Max. Umgebungstemperatur: Max. ambient temperature: | -20°C / +45°C -20°C / +45°C |
| Optik: Optics: | 120° Optik 120° optics |
| Belegung: Pin assignment: | 1 = DC (+) br br 2 = Eco (+) ws wh 3 = DC (-) bl bl 4 = NC |

Normen / Approbationen Standards / approvals

DIN EN 55015 (EMV)
DIN EN 61547 (EMV)
DIN EN 60598-1
DIN EN 62471



| Nomenklatur Nomenclature | Katalognr. Catalogue no. | Abdeckung Cover | Anschluss Connection type | Lichtstrom Luminous flux | Lichtfarbe Light temp. |
|-------------------------------------|-----------------------------|------------------------------------|---|-----------------------------|---------------------------|
| LED KL 185 PMMA _d -M8-57 | 15070140 | PMMA diffus PMMA diffuse | M8 Steckverbinder M8 connector 4pol. | ca. 804 lm | 5.700K |
| LED KL 185 PMMA _d -M8-40 | 15070142 | PMMA diffus PMMA diffuse | M8 Steckverbinder M8 connector 4pol. | ca. 804 lm | 4.000K |
| LED KL 185 ESG _d -M8-57 | 15070144 | ESG diffus safety glass diffuse | M8 Steckverbinder M8 connector 4pol. | ca. 804 lm | 5.700K |
| LED KL 185 ESG _d -M8-40 | 15070146 | ESG diffus safety glass diffuse | M8 Steckverbinder M8 connector 4pol. | ca. 804 lm | 4.000K* |

Technische Änderungen vorbehalten. Lichtstrom und Lichtfarbe können variieren.
Subject to technical changes. The luminous flux and colour temperature may vary.